



REALTY GROUP



8 Doomben Street Menangle Park NSW

4 2 2

This ultra modern masterpiece has been meticulously built by boutique builder Ascend homes. Situated in the expansive growth corridor that is known as Menangle Park. This new estate is positioned perfectly amongst the surrounding rolling hills. I guarantee that your family will absolutely love calling this split-level residence home.

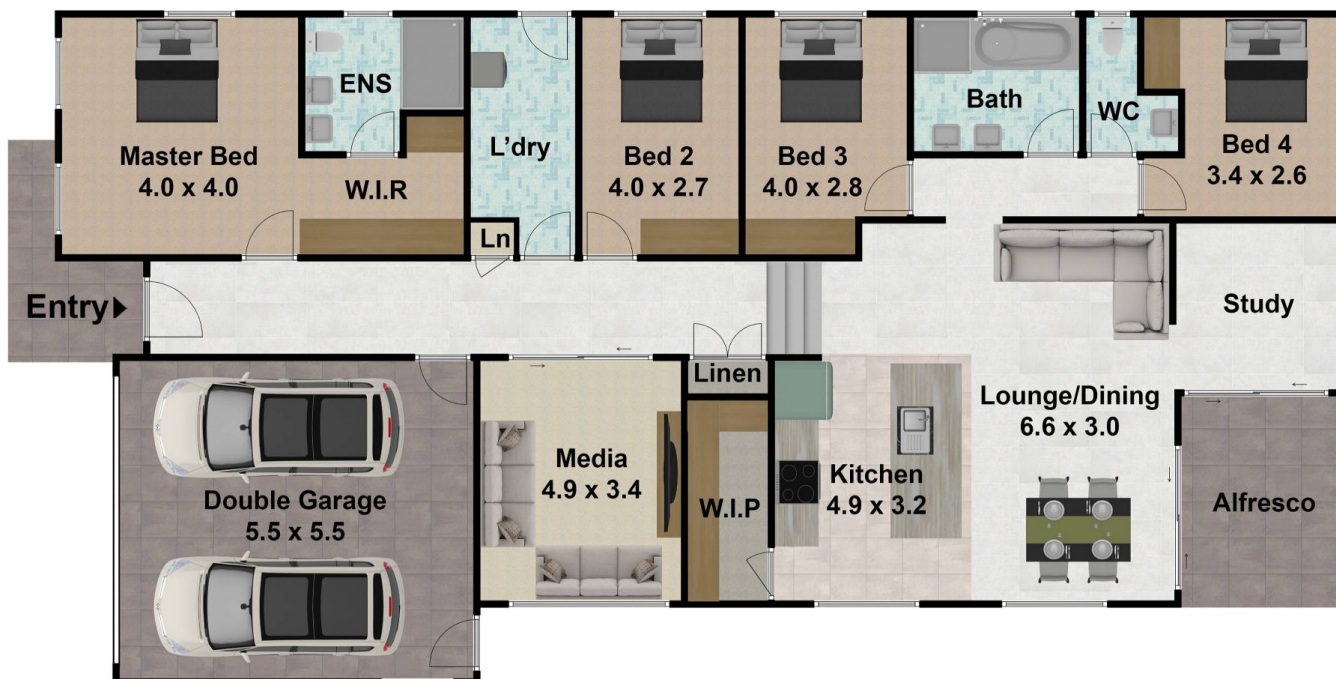
- * Soaring 3.3 metre ceiling height upon entry ensures space and natural light
- * Master bedroom comprises of a fully tiled ensuite with Jack & Jill sinks & walk in robe
- * 3 remaining bedrooms are a good size & all have mirrored built ins
- * Chef inspired kitchen with 900mm stainless steel appliances & 40mm stone benchtops
- * Theatre room with minimal windows ensuring a better cinematic experience
- * Main bathroom is tiled - floor to ceiling, has his/hers sinks

Price : \$ 1,100,000
Land Size : 432 sqm
View : <https://www.zrealtygroup.com.au/sale/nsw/macarthurcamden/menangle-park/residential/house/7600907>



Derek Stone
02 4610 7980

<https://www.zrealtygroup.com.au>



8 Doomben St, Menangle Park NSW 2563

DISCLAIMER: THIS IS FOR ILLUSTRATIVE PURPOSES ONLY. ALL DIMENSIONS ARE APPROXIMATE AND IT DOES NOT CONSTITUTE PART OF ANY LEGAL DOCUMENT.
All dimensions are approximate. Actual dimensions may vary. Floor plan prepared by uploadit.com.au 0401957996



REALTY GROUP